

Meeting of the Belgian-Dutch Network for ESM Research in Mental Health (update)



Belgian-Dutch Network for ESM Research in Mental Health

On **Thursday 14 and Friday 15 September 2023**, the yearly meeting of the Belgian-Dutch Network for ESM Research in Mental Health will take place in **Groningen**. During this meeting, researchers using ambulatory monitoring in mental health research come together to meet each other, share new research projects and, most importantly, join forces in hackathons and brainstorm sessions. For updates on the program see: <https://esm-network.eu/>.

Registration is still open! [ESM meeting - Register](#)



Course for master and PhD students of GSMS - 2 or 4 ECTS



Are you a master or PhD student from the GSMS and eager to learn about single-subject studies? Then the iLab GSMS course **“Single-subject study design to assess mental health”** will be interesting for you!

You can **apply for this course up till 1 September 2023** through the following webpage:
<https://cursus1.webhosting.rug.nl/gsms>

Go to upcoming courses and choose this course.

Starting September 2023, 2 or 4 ECTS

SPR Next Gen series

On **September 5th** at 17:00 CET,

Evelien Snippe and **Omid Ebrahimi** will provide an online talk as part of the SPR Next Gen series. Both talks will be on ESM in treatment.



Evelien Snippe, Dr. - Invited Speaker

Capturing the temporal order of improvement in symptoms and daily life experiences during treatment for depression



Omid Ebrahimi, M. Sc. - Pre-Doctoral Speaker

Towards precision in the diagnostic profiling of patients: Leveraging symptom dynamics as in the assessment and treatment of mental health disorders

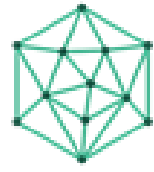
The talk of Evelien Snippe will cover how change point analyses applied to ESM data collected over the course of psychotherapy can provide insight in the temporal order of gains in behaviors, cognitions and emotions. Also, the advantage of change point analyses compared to vector autoregressive models to gain insight in the order of improvement will be discussed.

Link to the talk on Zoom:

<https://tinyurl.com/NextGen-EU-SPR>

Other News

Get digital: a monthly series on mobile Health



Digital Health applied to the clinical research of brain disorders
ECNP Network

Digital approaches are fundamentally changing traditional ways of diagnosis, monitoring, management, and treatment of brain disorders worldwide. **Get Digital** is an online series on mHealth organised by the ECNP Digital Health Applied to the Clinical Research of Brain Disorders Network.

These online series will start at the **5th of September** (16:00-17:00 CEST):

Nicholas Cummins (King's College London, UK)

The potential of smartphones voice recordings to monitor depression severity

How to attend: To receive link and password please send an email to network_digitalhealth@ifss.kit.edu including your name and affiliation.

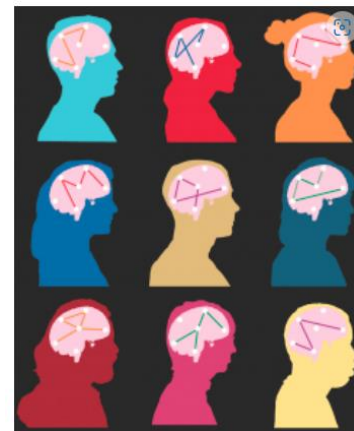
For more upcoming online events, [click here](#).

Group Iterative Multiple Model Estimation (GIMME)

FYI a tip of a user of the online GIMME discussion group. **Group Iterative Multiple Model Estimation (GIMME)** is available on CRAN as a freely distributed and actively maintained R package `gimme`.

For answers on your questions on Group Iterative Multiple Model Estimation (GIMME) analyses for the R package `gimme` you can go to: <https://groups.google.com/g/gimme-r>

More information can be found here: <https://tarheels.live/gimme/>



E-learning focusgroeponderzoek/focus group research (in Dutch)

With the **E-learning focusgroeponderzoek/focus group research (in Dutch)** you will learn how to carry out focus group research yourself on the basis of nine teaching modules. In six months you can go through the nine lesson modules at your own pace.

For more information and costs you can visit the website: <https://www.onderzoekswinkel.nl/e-learningfocusgroepen>



de OnderzoeksWinkel

New job for Fionneke Bos

After her PhD and a postdoc on ESM in clinical practice, **Fionneke Bos** is leaving the UMCG in September 2023, for a new challenge at Researchable BV.

We thank Fionneke for all her scientific contributions to our department and especially to the PETRA project! Congratulations Researchable BV and Fionneke!!



New employee – Yong Zhang

In my PhD projects, I will develop novel simulation-based methods that can be used to assess the quality of temporal network models, which are gaining increasing popularity in clinical research and practice these days.



My name is **Yong Zhang**. I am a PhD student at the Department of Psychometrics and Statistics at the Faculty of Behavioural and Social Sciences, University of Groningen. My main research interest lies in experience sampling methodology and related analytical techniques of intensive longitudinal data.

This development will hopefully provide future researchers and clinicians a handy statistical toolkit that the networks they estimate and draw inferences from are of sufficient quality and can thus provide rather accurate information of the symptom dynamics of patients. Throughout this process, I will also constantly reflect on how to improve the current experience sampling methodology and to adapt the simulation-based methods accordingly. I'm open to collaborate with researchers and clinicians with similar research interests. My supervision team includes the wonderful Laura Bringmann, Anja Ernst, Peter de Jonge, and Ginette Lafit (KU Leuven).

Upcoming symposia and conferences

14 - 15 September 2023, Groningen, NL. [Belgian-Dutch Network for ESM Research in Mental Health, Annual Meeting \(update, see above\)](#)

4 - 6 October 2023, Tilburg, NL. [Conferentie Emotions 2023](#)

20 - 25 October 2023, Rio de Janeiro, Brazil. [World Sleep 2023](#)

1 - 3 November 2023, Veldhoven, NL. [VGct Najaarscongres](#)

30 November & 1 December 2023, Papendal, NL. [SLAAP2023 Slaapcongres Nederland / Dutch Sleep Congress \(NSWO & SNVL\)](#)

10 - 12 April 2024, Maastricht, NL. [NVVP Voorjaarscongres 2024](#)

30 - 31 May 2024, Groningen, NL. [Supporting Health by Technology Conference](#)

2 - 5 June 2024, Limerick, Ireland. [12th conference of the International Society for Research on Internet Interventions \(ISRII\)](#)

11 - 15 Juni 2024, Berlin, Germany, [3. Deutschen Psychotherapie Kongress \(DPK\)](#)

Please let us know which conferences you have planned to attend so we can update each other!

Recent publications

Ciampelli S, Voppel AE, de Boer JN, Koops S, Sommer IEC. [Combining automatic speech recognition with semantic natural language processing in schizophrenia](#). *Psychiatry Res.* 2023 May 16;325:115252. doi: 10.1016/j.psychres.2023.115252. Epub ahead of print. PMID: 37236098.

George SV, Kunkels YK, Smit A, Wichers M, Snippe E, van Roon AM, Riese H. [Predicting recurrence of depression using cardiac complexity in individuals tapering antidepressants](#). *Translational Psychiatry.* 2023 May 30;13(1):182. doi: 10.1038/s41398-023-02474-7. PMID: 37253734; PMCID: PMC10229565.

Hogendoorn, E., Ballering, A. V., van Dijk, M. W. G., Rosmalen, J. G. M., & Burke, S. M. [Discordance between Adolescents and Parents in Functional Somatic Symptom Reports: Sex Differences and Future Symptom Prevalence](#). *Journal of Youth and Adolescence*, 52(10), 2182-2195. doi: 10.1007/s10964-023-01810-w

Jonker I, Visschedijk S, Rosmalen JGM, Schenk HM, Van Ockenburg SL. [Individual Heterogeneity in the Relations Between Sleep, Inflammation, and Somatic Symptoms](#). *Psychosom Med.* 2023 Apr 1;85(3):266-272. doi: 10.1097/PSY.0000000000001175. Epub 2023 Feb 3. PMID: 36825926; PMCID: PMC10082064.

Koops S, Brederoo SG, de Boer JN, Voppel AE, Sommer IEC. [Herkennen van depressie met computationele taalanalyse \[Recognizing depression through computational language analysis\]](#). *Tijdschr Psychiatr.* 2023;65(3):198-201. Dutch. PMID: 36951779.

Meins IA, Muijsson-Bouwman DC, Nijman SA, Greaves-Lord K, Veling W, Pijnenborg GHM, van der Stouwe ECD. [VR-SOAP, a modular virtual reality treatment for improving social activities and participation of young people with psychosis: a study protocol for a single-blind multi-centre randomized controlled trial](#). *Trials.* 2023 Apr 15;24(1):278. doi: 10.1186/s13063-023-07241-z. PMID: 37061694; PMCID: PMC10105944.

Ruitenbergh, G. M., Booij, S. H. S., Batelaan, N. M. N., Hoogendoorn, A. W. A., & Visser, H. A. H. [Transdiagnostic factors predicting the 2-year disability outcome in patients with anxiety and depressive disorders](#). *BMC Psychiatry*, 23, [443]. doi: 10.1186/s12888-023-04919-1

van der Tuin S, Booij SH, Oldehinkel AJ, van den Berg D, Wigman JTW, Lång U, Kelleher I. [The dynamic relationship between sleep and psychotic experiences across the early stages of the psychosis continuum](#). *Psychol Med.* 2023 May 23:1-9. doi: 10.1017/S0033291723001459. Epub ahead of print. PMID: 37218061.

von Klipstein L, Servaas MN, Lamers F, Schoevers RA, Wardenaar KJ, Riese H. [Increased affective reactivity among depressed individuals can be explained by floor effects: An experience sampling study](#). *J Affect Disord.* 2023 Aug 1;334:370-381. doi: 10.1016/j.jad.2023.04.118. Epub 2023 May 6. PMID: 37150221.

iLab devices

We are very happy that our internal UMCG device application was granted to replace older phones and laptops! Just to remind you if you want to use iLab devices (including Motion Watches, iPads, powerbanks, audio/video recording equipment etc.) for your research, send an email to Kitty Huysman (ilab-psychiatry@umcg.nl).

iLab rooms (UCP)

If you want to reserve an iLab room to conduct your iLab research you can mail Kitty Huysman: ilab-psychiatry@umcg.nl for instructions to get access to the Google reservation calendar.

Share your research news with us!

If you know any topics you think might be of interest to the iLab newsletter please share them with us!

Contact

iLab staff

Harriëtte Riese:	h.riese@umcg.nl (head of iLab)
Kitty Huysman:	ilab-psychiatry@umcg.nl (equipment, room reservations, newsletter)
Marij Zuidersma:	m.zuidersma@umcg.nl (methodological & statistical advice, iLab website)
Robert Schoevers:	r.a.schoevers@umcg.nl (head of UCP)
Sanne Booij:	s.h.booij@umcg.nl (PRoSPECTs project)

Unsubscribe newsletter: send an email to ilab-psychiatry@umcg.nl